



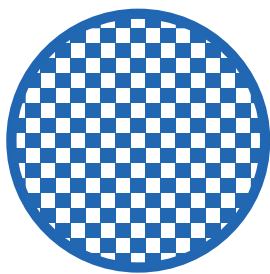
DIESEL PARTICULATE FILTERS (DPF) BY WHEELER



SEE WHAT SETS US APART



Wheeler DPF are a direct replacement for most common OEM filter systems and designed to be an exact fit for ease of installation and removal.



SUBSTRATE

All DPF's utilize the same substrate supplied to OEM



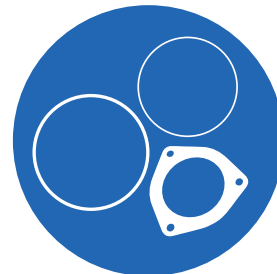
PROPRIETARY WASH COAT

Allows for passive regeneration to occur at 380° compared to OEM or other aftermarket brands at 700°. This provides improved fuel efficiency and longer filter lifespan



DURABLE

Hydroformed 1 piece canning construction reduces welding while increasing material strength and heat retention



ACCESSORIES

DPF include all appropriate gaskets and clamps

*Wheeler Tru-Fit DPFs Are Not Approved For Sale, Installation, Or Use In California, Or In Areas Where California Emissions Compliance Is Required.

NEED MORE PARTS? WE'RE HERE TO HELP

wheelerfleet.com | 800.636.4365

| Uptime Delivered

DPF'S FOR CUMMINS/PACCAR ENGINES



2901-0101

INCLUDES (2) GASKETS AND (2) CLAMPS	
APPLICATION	CROSSES
CUMMINS ISX ENGINES	4969700NX, 2880168NX, 4969701NX, 5283778NX, 5297990NX, 4969702NX, 5283669NX, 5297522NX, 4965226NX, 4965129NX, 4969702, 5283669, 5297522, 5283778, 5297990



2901-0102

INCLUDES (2) GASKETS AND (2) CLAMPS	
APPLICATION	CROSSES
CUMMINS ISM/ISL ENGINES	Q621378, 4965244, 4965244NX, 2880169NX, 4352923NX, N8894071 (NOVA BUS#)



2901-0109

INCLUDES (2) GASKETS AND (2) CLAMPS	
APPLICATION	CROSSES
CUMMINS ISL ENGINES	2871463NX, Q629362



2901-0110

INCLUDES (2) GASKETS AND (2) CLAMPS	
APPLICATION	CROSSES
CUMMINS ISM ENGINES	4965218NX



2901-0112

INCLUDES (2) GASKETS AND (2) CLAMPS	
APPLICATION	CROSSES
CUMMINS ISX ENGINES	5283799NX, 4969703NX, 5297989, 4965305NX, 20970295, 4965322, 4969703, 5283799, 5297989NX



2901-0116

INCLUDES (2) GASKETS AND (2) CLAMPS	
APPLICATION	CROSSES
CUMMINS ISM/ISL ENGINES	4936737NX, 4965055NX, 3817962C91 (NAVISTAR ASSEMBLY #)



2901-0117

INCLUDES (2) GASKETS AND (2) CLAMPS	
APPLICATION	CROSSES
CUMMINS ISC, PACCAR PX8 ENGINES	4969838NX, 4965286NX, 4965286, 4969838, 4969839NX, 4969839, Q621371, Q623804, Q623316



2901-0118

INCLUDES (2) GASKETS AND (2) CLAMPS	
APPLICATION	CROSSES
CUMMINS ISB, PACCAR PX6 ENGINES	4965227NX, Q617940A, 4965287NX, Q621386, Q621386A



2901-0119

INCLUDES (2) GASKETS AND (2) CLAMPS	
APPLICATION	CROSSES
CUMMINS ISX ENGINES	2871578NX, Q629458



2901-0122

INCLUDES (2) GASKETS AND (2) CLAMPS	
APPLICATION	CROSSES
CUMMINS ISX ENGINES	2871581NX, Q629477

DPF'S FOR CUMMINS/PACCAR ENGINES



2901-0126

INCLUDES (2) GASKETS AND (2) CLAMPS

APPLICATION	CROSSES
PACCAR MX-13 ENGINES	1827739PEX



2901-0129

INCLUDES (2) GASKETS AND (2) CLAMPS

APPLICATION	CROSSES
CUMMINS ISM ENGINES	4965224NX



2901-0135

INCLUDES (2) GASKETS AND (2) CLAMPS

APPLICATION	CROSSES
CUMMINS ISL ENGINES	2871463NX, Q629362



2901-0136

INCLUDES (2) GASKETS AND (2) CLAMPS

APPLICATION	CROSSES
CUMMINS ISM ENGINES	4965218NX



2901-1000

INCLUDES (2) GASKETS AND (2) CLAMPS

APPLICATION	CROSSES
CUMMINS ISC ENGINES	3103617, 3976606, 3978026, 3999661, 3999662, Q617940, Q619496, Q619733, Q61925A, Q619495, Q619725, Q619725A, Q619733, 3978028



2901-0122

INCLUDES (2) GASKETS AND (2) CLAMPS

APPLICATION	CROSSES
PACCAR MX -13 ENGINES	1827310PEX, 1827310, 2871581NX, 2871581



2901-0154

INCLUDES (2) GASKETS AND (2) CLAMPS

APPLICATION	CROSSES
CUMMINS ISX ENGINES	5295604NX



2901-0156

INCLUDES (2) GASKETS AND (2) CLAMPS

APPLICATION	CROSSES
CUMMINS ISB, PACCAR PX8 ENGINES	2871462NX



2901-0160

INCLUDES (2) GASKETS AND (2) CLAMPS

APPLICATION	CROSSES
CUMMINS ISX ENGINES	2871578NX, Q629458



2901-0161

INCLUDES (2) GASKETS AND (2) CLAMPS

APPLICATION	CROSSES
CUMMINS ISX ENGINES	2871581NX, Q629477

DPF'S FOR DETROIT DIESEL ENGINES



2901-0113

INCLUDES (2) GASKETS AND (2) CLAMPS

APPLICATION	CROSSES
DETROIT DIESEL S60 EPA07 ENGINES	A6804908692 (ASSEMBLY #A6804910594), A6804910294



2901-0127

INCLUDES (2) GASKETS AND (2) CLAMPS

APPLICATION	CROSSES
DETROIT DIESEL DD13, DD15 ENGINES	A6804910794, A0004903492, EA6804910794



2901-0128

INCLUDES (2) GASKETS AND (2) CLAMPS

APPLICATION	CROSSES
DETROIT/ MERCEDES MB-OM926 ENGINES	A6804910094 SUPERSEDED BY RA6804910097, A6804906192, R23537521, RA6804908792, A6804905792



2901-1007

INCLUDES (2) GASKETS AND (2) CLAMPS

APPLICATION	CROSSES
DETROIT DIESEL S50 ENGINES	23535827

DPF'S FOR NAVISTAR / INTERNATIONAL ENGINES



2901-0103

INCLUDES (2) GASKETS AND (2) CLAMPS

APPLICATION	CROSSES
MAXXFORCE 7/DT ENGINES	2593981C91 FLANGED (C057-SA HORIZONTAL) 2593981C91 (C039-SA VERTI- CAL), 82003341, A00383921 2593981R91, 5010836R91, 2604873C91, 2593981C91, 2605123C91, 5010847R91



2901-0104

INCLUDES (2) GASKETS AND (2) CLAMPS

APPLICATION	CROSSES
MAXXFORCE 7/DT ENGINES	2594356C91, 2594356R91, 5010834R91



2901-0105

INCLUDES (2) GASKETS AND (2) CLAMPS

APPLICATION	CROSSES
MAXXFORCE ENGINES	2594131C91, A00574039, 2594131R91, 5010832R91



2901-0106

INCLUDES (2) GASKETS AND (2) CLAMPS

APPLICATION	CROSSES
MAXXFORCE 7/DT ENGINES	2594165C91, 2594165R91, 5010830R91

DPF'S FOR NAVISTAR / INTERNATIONAL ENGINES



2901-0107

INCLUDES (2) GASKETS AND (2) CLAMPS

APPLICATION	CROSSES
MAXXFORCE 9 ENGINES	2604870C91, 2605796C91, 2611630C91 (ASSEMBLY # A00317258 MODEL#2012), 5010852R1, 2604870R91, 5010846R1



2901-0108

INCLUDES (2) GASKETS AND (2) CLAMPS

APPLICATION	CROSSES
MAXXFORCE 9 ENGINES	2612521C91, 3712647C91, 2604430C91, 5010853R1, 2604430R91, 5010843R1, 2605039C91



2901-0120

INCLUDES GASKET TAPE AND (2) CLAMPS

APPLICATION	CROSSES
MAXXFORCE 13 ENGINES	CP232717 (ASSEMBLY # 3859691C94), 2604830C91, 2604046C91 (ASSEMBLY # 3859691C94), 2604830R91, 5010845R1



2901-0121

INCLUDES GASKET TAPE AND (2) CLAMPS

APPLICATION	CROSSES
MAXXFORCE 13 ENGINES	2604823C91, 2603961C91, 2604823R91, 5010844R1



2901-0123

INCLUDES (2) GASKETS AND (2) CLAMPS

APPLICATION	CROSSES
MAXXFORCE 13 ENGINES	2601229C91, Q621944, 2601229R91, 5010848R1



2901-0133

INCLUDES (2) GASKETS AND (2) CLAMPS

APPLICATION	CROSSES
MAXXFORCE 11, 13 ENGINES	Q622369, Q621936, 2596665C91, 2596665R91, 5010851R1

DPF'S FOR MACK / VOLVO ENGINES



2901-0111

INCLUDES (2) GASKETS AND (2) CLAMPS

APPLICATION	CROSSES
MACK MP7 ENGINES	85125682, 21048577 20231111, 85000899 Or 85003793, 21817835



2901-0115

INCLUDES (2) GASKETS AND (2) CLAMPS

APPLICATION	CROSSES
MACK MP7 ENGINES	21395825, 85124613



2901-0124

INCLUDES (2) GASKETS AND (2) CLAMPS

APPLICATION	CROSSES
VOLVO D11,D13,D16 ENGINES	20864127, 85000726, 21850658



2901-0125

INCLUDES (2) GASKETS AND (2) CLAMPS

APPLICATION	CROSSES
MACK MP8, VOLVO D13 ENGINES	21212429, 21212426, 21212431

DPF'S FOR MACK / VOLVO ENGINES



2901-0132

INCLUDES (2) GASKETS AND (2) CLAMPS

APPLICATION	CROSSES
MACK MP7, VOLVO D13 ENGINES	21905492, 85001353, 85001367, 20864558

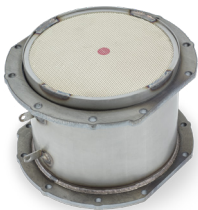


2901-0150

INCLUDES (2) GASKETS AND (2) CLAMPS

APPLICATION	CROSSES
MACK MP7, MP8, VOLVO D11, D13 EN- GINES	21471269, 21395827, 21393279, 21395827, 22761989, 22342601, 85124653

DPF'S FOR ISUZU ENGINES



2901-0130

INCLUDES (2) GASKETS AND (2) CLAMPS

APPLICATION	CROSSES
ISUZU 6HK1, 4HK1 ENGINES	897608057, 8-97608-057-3

DPF'S FOR CATERPILLAR ENGINES



2901-0114

INCLUDES (2) GASKETS AND (2) CLAMPS

APPLICATION	CROSSES
CATERPILLAR C13, C15 ENGINES	290-0045, 301-7856, 10R-6088

HIGH EFFICIENCY DIESEL PARTICULATE FILTERS

IMPROVED ROUTE PERFORMANCE & VEHICLE EFFICIENCY

Wheeler High Efficiency DPF's are designed to perform in the more demanding environments. In addition to quality stainless steel construction with a high-tech proprietary coating, Wheeler High Efficiency DPF's offer an even higher flow design. This further enhances combustion and dissipation of particulate (soot) matter maximizing operational efficiency with fewer regenerations.

HIGH EFFICIENCY DPF'S FOR CUMMINS/PACCAR ENGINES



2901-0112HE

INCLUDES (2) GASKETS AND (2) CLAMPS

APPLICATION	CROSSES
CUMMINS ISX ENGINES	5283799NX, 4969703NX, 5297989, 4965305NX, 20970295, 4965322, 4969703, 5283799, 5297989NX

HIGH EFFICIENCY DPF'S FOR MACK/VOLVO ENGINES



2901-0111HE

INCLUDES (2) GASKETS AND (2) CLAMPS

APPLICATION	CROSSES
MP7 ENGINES	85125682, 21048577 20231111, 85000899 Or 85003793, 21817835



2901-0115HE

INCLUDES (2) GASKETS AND (2) CLAMPS

APPLICATION	CROSSES
MP7 ENGINES	21395825, 85124613



2901-0125HE

INCLUDES (2) GASKETS AND (2) CLAMPS

APPLICATION	CROSSES
MP8, D13 ENGINES	21212429, 21212426, 21212431



2901-0150HE

INCLUDES (2) GASKETS AND (2) CLAMPS

APPLICATION	CROSSES
MP7, MP8, D11, D13 ENGINES	21471269, 21395827, 21393279, 21395827, 22761989, 22342601, 85124653

HIGH EFFICIENCY DPF'S FOR POWERSTROKE ENGINES



2901-0169

- INCLUDES (1) GASKET AND HARDWARE
- EASY-TO-ACCESS CATALYST CLEANING VIA STAINLESS V-BAND FLANGE

APPLICATION	CROSSES
F250/F350/ F450 SUPER DUTY '07-'10	51247840617, 9C3Z5H221B



2901-0165

- INCLUDES (1) GASKET AND HARDWARE
- EASY-TO-ACCESS CATALYST CLEANING VIA STAINLESS V-BAND FLANGE

APPLICATION	CROSSES
F250/F350 '07-'10	9C3Z5H221A, 649007, D64-9007

DPF CLAMPS



2914-0027



2914-0030



2914-0038

PART #	DESCRIPTION	DPF FITMENT
2914-0027 [ALTERNATE PART#] 2871861 [ALTERNATE PART#] 2914-0049	V-BAND CLAMP, STAINLESS STEEL, 9 1/2" I.D	2901-0118, 2901-0156, 2901-0160
2914-0028	V-BAND CLAMP, STAINLESS STEEL, 11-7/8" I.D	2901-0109, 2901-0117, 2901-0135, 2901-1007, 2901-1000, 2901-0161
2914-0029 [ALTERNATE PART#] 2871863	V-BAND CLAMP, STAINLESS STEEL, 13.38" I.D	2901-0101, 2901-0102, 2901-0110, 2901-0112, 2901-0112HE, 2901-0116, 2901-0119, 2901-0122, 2901-0123, 2901-0126, 2901-0129, 2901-0132, 2901-0133, 2901-0136, 2901-0122, 2901-0154, 2901-0157, 2901-0158
2914-0030	V-BAND CLAMP, STAINLESS STEEL, 14.33" I.D	2901-0124
2914-0035 [ALTERNATE PART#] 2880213	V-BAND CLAMP, STAINLESS STEEL, 6.38" I.D	2901-0111, 2901-0111HE, 2901-0113, 2901-0115, 2901-0115HE, 2901-0127, 2901-0150, 2901-0150HE
2914-0036	V-BAND CLAMP, STAINLESS STEEL, 14.35" I.D	2901-0125, 2901-0125HE
2914-0037 [ALTERNATE PART#] 2594128C1	V-BAND CLAMP, STAINLESS STEEL, 9.45" I.D	2901-0105, 2914-0106, 2901-0108, 2901-0149
2914-0038	V-BAND CLAMP, STAINLESS STEEL, 13.38" I.D	2901-0120, 2901-0121
2914-0042	V-BAND CLAMP, STAINLESS STEEL, 9.173" I.D	2901-0169, 2901-0165
2914-0043	V-BAND CLAMP, STAINLESS STEEL, 13.780" I.D	2901-0114

DPF GASKETS



2914-0000



2914-0016



2914-0041

PART #	DPF FITMENT
2914-0000 [ALTERNATE PART#] 2871451	2901-0118, 2901-0156, 2901-0160
2914-0001	2901-0109, 2901-0117, 2901-0135, 2901-1007, 2901-1000, 2901-0161
2914-0002	2901-0101, 2901-0102, 2901-0110, 2901-0112, 2901-0112HE, 2901-0116, 2901-0119, 2901-0122, 2901-0123, 2901-0126, 2901-0129, 2901-0132, 2901-0133, 2901-0136, 2901-0122, 2901-0154, 2901-0157, 2901-0158
2914-0003	2901-0124
2914-0007	2901-0111, 2901-0111HE, 2901-0113, 2901-0115, 2901-0115HE, 2901-0150, 2901-0150HE
2914-0010	2901-0127
2914-0014	2901-0125, 2901-0125HE
2914-0015	2901-0105, 2901-0106, 2901-0108, 2901-0149
2914-0016	2901-0120, 2901-0121
2914-0021	2901-0114
2914-0041	2901-0169, 2901-0165

NEED MORE PARTS? WE'RE HERE TO HELP

wheelerfleet.com | 800.636.4365

Uptime Delivered